



# GMT MONTHLY MEMBERSHIP PROGRESS REPORT

Results as of: 5/31/2017

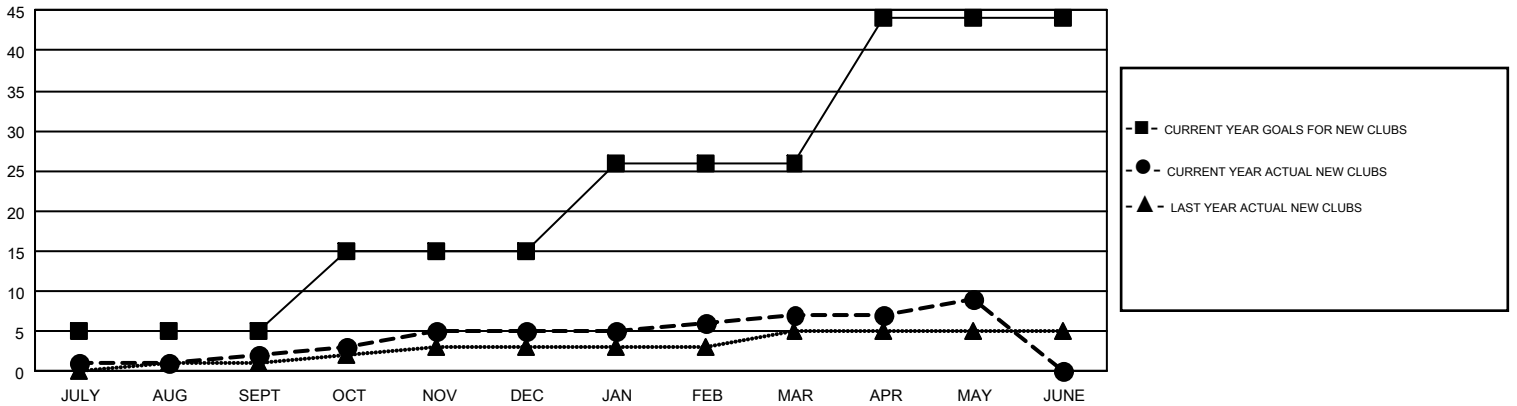
## GMT Constitutional Area 1, Group B

GMT: CINDY GREGG

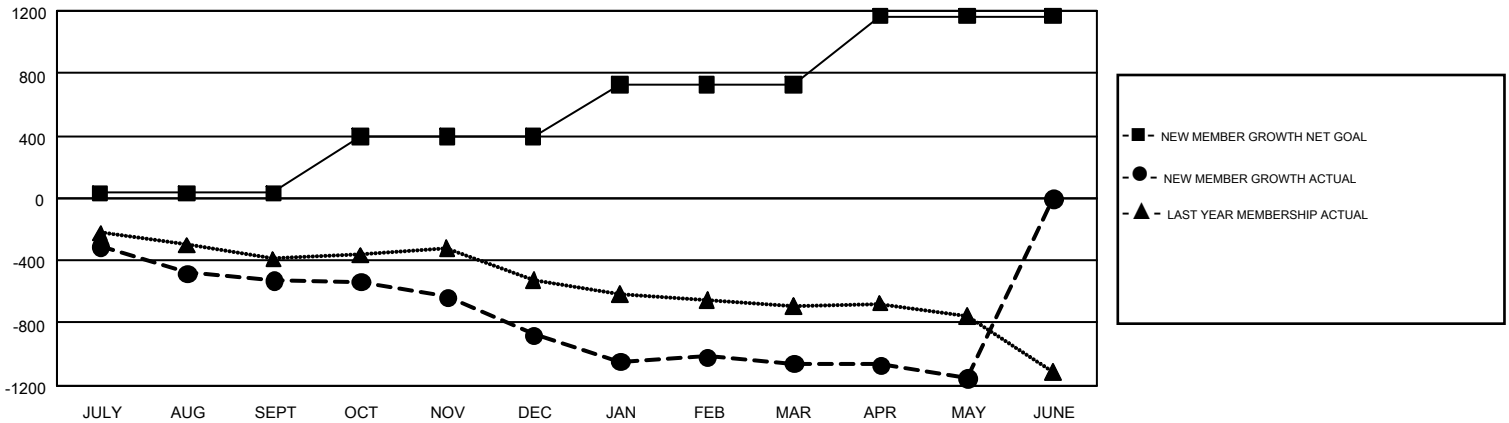
REPORT DOES NOT INCLUDE CLUBS IN UNDISTRICTED AREAS.

Clubs				Members			
RESULTS FOR 2016-2017				RESULTS FOR 2016-2017			
QUARTER	NEW CLUB GOAL	NEW CLUBS	DROPPED CLUBS	QUARTER	NEW MEMBER GROWTH NET GOAL (not reinstated or transfers)	NEW MEMBER GROWTH ACTUAL (not reinstated or transfers)	DROPPED MEMBERS ACTUAL (including transfers)
JULY/AUG/SEPT	5	2	6	JULY/AUG/SEPT	33	674	1,201
OCT/NOV/DEC	10	3	8	OCT/NOV/DEC	360	823	1,172
JAN/FEB/MAR	11	2	8	JAN/FEB/MAR	337	931	1,113
APR/MAY/JUNE	18	2	5	APR/MAY/JUNE	437	592	687

GOALS AND ACTUAL NEW CLUBS CUMULATIVE



GOALS AND ACTUAL MEMBERS CUMULATIVE



DROPPED CLUBS: 27	932 CLUBS OF 1,571 ADDED 1 OR MORE NEW MEMBERS	<b>GENDER DISTRIBUTION</b>
<b>DROPPED MEMBERS</b>	<a href="#">CLICK HERE FOR CUMULATIVE MEMBERSHIP DATA</a>	MALE            30,683 (72.92%)
DECEASED            807		FEMALE        11,397 (27.08%)
CLUB CANCELLED      161		TOTAL FAMILY UNIT MEMBERS            7,849
OTHER                    3,200		FAMILY MEMBERS PAYING HALF DUES            4,023
<b>TOTAL                    4,168</b>		